

Potters Subdivision  
FLAT  
Page 42

PLAT  
SHOWING AN ENLARGEMENT  
OF THE CORPORATE LIMITS  
OF PRICE CITY, UTAH

MAY 1914

Scale 1" = 100' (original)  
1" = 120' (this copy)

Wetzel & Herres  
Price, Utah  
F.S. Hunlevy

SURVEYOR'S CERTIFICATE

State of Utah  
County of Carbon ss.

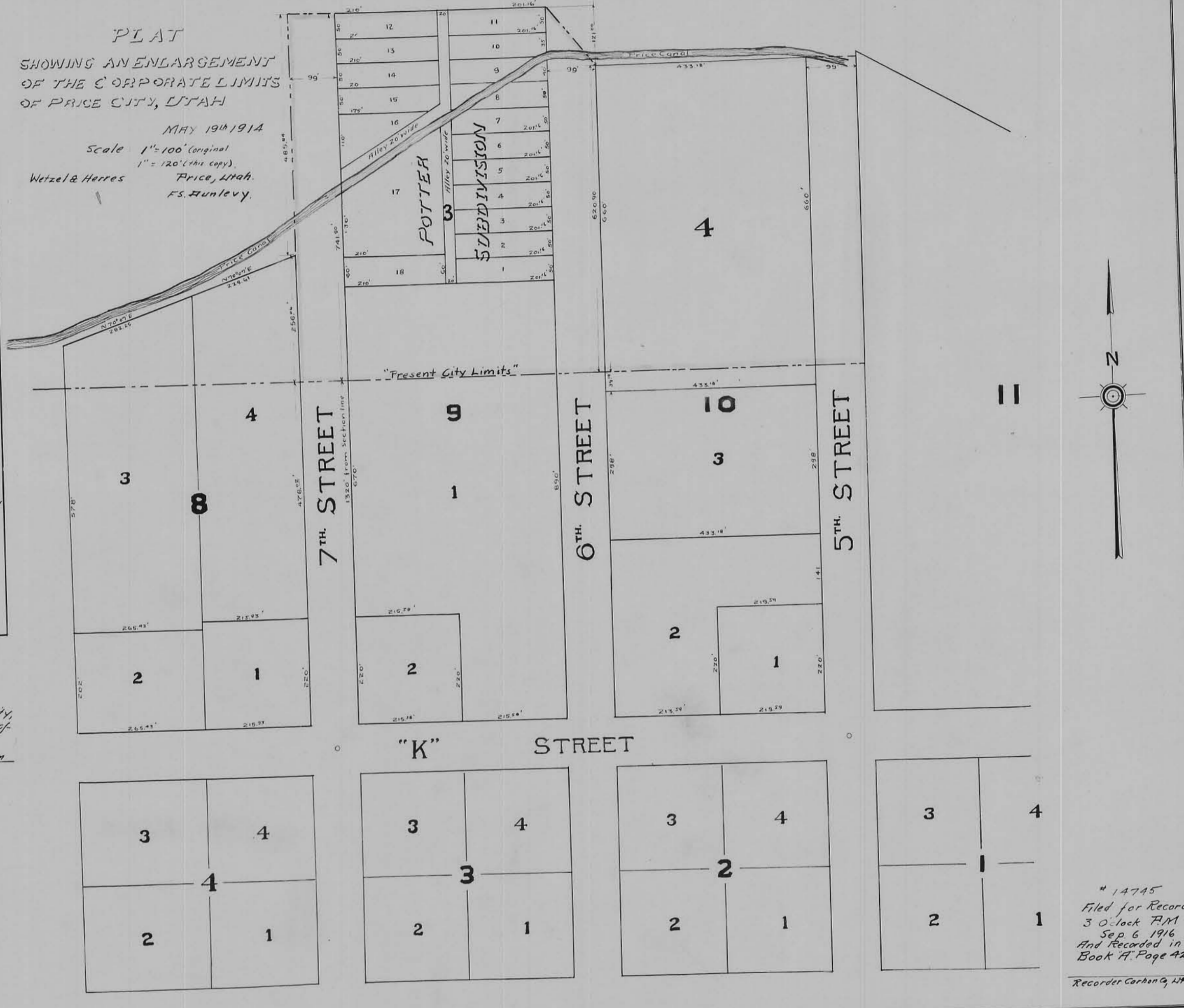
I, F.S. Hunlevy, Deputy Surveyor of Carbon County, do hereby certify that the hereto attached is a full, true and correct plat, according to the Price City Survey, of that certain piece of land petitioned by John Potter, et al, to be annexed to the corporate limits of Price City, Carbon County, Utah, said tract of land being contiguous to the corporate limits of Price City, Utah and being more particularly described as follows: commencing at a point which is 528.74 ft north of the Southeast corner of Block "B", and on the east boundary of Block "B", Sec. 16-Twp. 14S., R. 10E., S.L.B.&M. the same being sometimes known and designated as Block "B" of the "Local Survey", thence North 74.12 ft, thence East 530.34 ft to the N.E. Corner of Lot 3, Block "B", thence South east to the N.W. Corner of Lot 4, Block "B", thence East 532.44 ft to the West boundary of Block "11", thence South 620.32 ft to the Corporate Limits of Price City, Utah, thence West along the Corporate limits 1164.21 ft to the place of beginning.

(Sgd) F.S. Hunlevy,  
Deputy Surveyor of Carbon County

Subscribed and sworn to before me this 19th day of May 1914.

(Sgd) C.C.M. Whinney,  
Notary Public

My Commission Expires  
January 19, 1915



Approved by the Mayor and City Council of Price City, Carbon County, Utah in regular session this 19th day of May 1914.

(Sgd) Carl G. Gunderson  
Mayor

(Sgd) L.F. Loubser  
City Recorder

Filed for record this 6th day of September 1916

(Sgd) Barbara Forrester  
County Recorder

# 14745  
Filed for Record  
3 O'clock P.M.  
Sep. 6 1916  
And Recorded in  
Book F, Page 42  
Recorder Carbon Co, Utah